

Get the jump
on your
COLLEGE CAREER
with
DUAL ENROLLMENT

NAHS Dual Enrollment Info Session

THURSDAY JANUARY 25, 2024, 6PM (ZOOM)

NORTH ATLANTA COUNSELING DEPARTMENT

SCAN CODE
FOR COPY OF
PRESENTATION

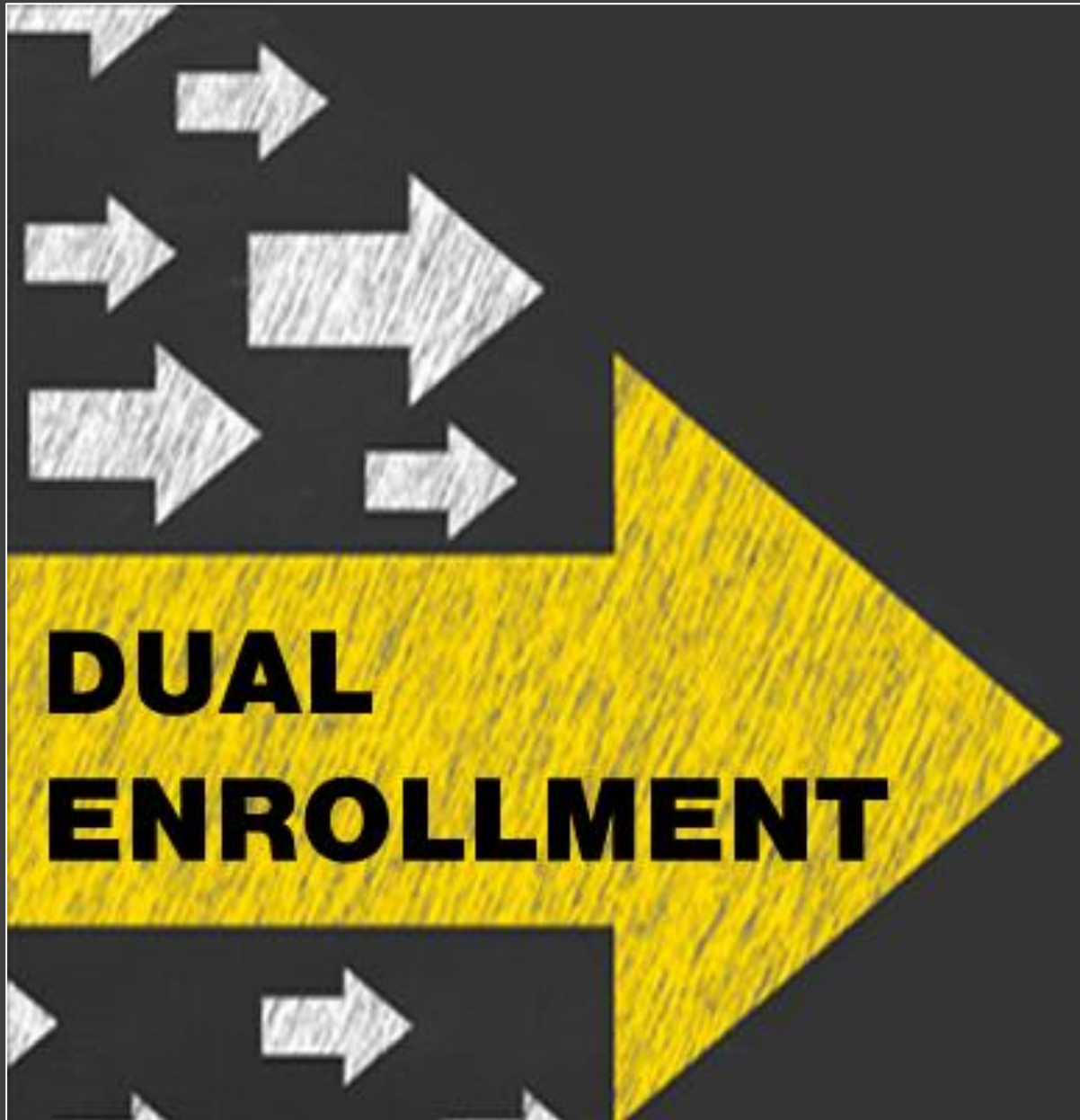




DUAL ENROLLMENT
**College &
High School**
at the SAME time!

What is Dual Enrollment?

Dual Enrollment provides the opportunity for qualifying juniors and seniors in high school to take college-level courses.



- ➔ Gives students a taste of college coursework while they are still enjoying the safe confines of the high school environment.
- ➔ Students earn credits that may be transferable to a 2-year or 4-year college
- ➔ College course credits are applied to both the HS and college transcript
- ➔ College course credits can count to meet HS graduation requirements AND potentially applied towards an Associates or Bachelor's degree

HOW MUCH DOES IT COST A STUDENT TO PARTICIPATE IN DUAL ENROLLMENT?



FREE

The State of GA provides Dual Enrollment Funding for....

College classes up to 30 Semester or 45 Quarter College Hours

College courses on the state approved dual enrollment course directory

State Funding covers...

Tuition

Mandatory Fees

Required Textbooks



Dual Enrollment Program Benefits for Students

Less time required after HS to finish a college degree

Provides students a head start on the college experience

Saves students money on tuition

May be able to take classes not offered at the HS

Remain eligible to participate in local HS athletics, activities and events

NAHS DE Program Eligibility Requirements (2024-25 School Year)



NAHS Students must meet ALL of the following requirements to be eligible for the DE program:



11th or 12th grade students on track for graduation



Meet all state of GA DE eligibility requirements as listed on the GA Futures website



Enter DE Program in the Summer or Fall term
(no mid-year or mid-term entry)



Complete ALL steps on the NAHS DE Application Process Checklist by the deadlines designated by NAHS



Be accepted by a DE college/program on the list of NAHS Approved DE Colleges

NAHS DE Eligibility Requirements

Follow the Steps!
Meet the Deadlines!



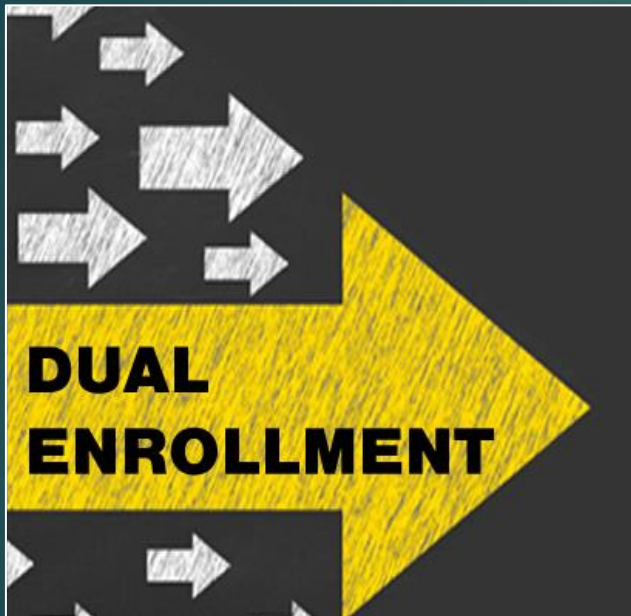
Alert

Students who do not follow ALL NAHS DE application procedures & deadlines **WILL NOT BE ELIGIBLE** to participate in the DE program, *even if a college has accepted the student.*



DE program participation and state funding require approval from the student's NAHS school counselor.

Dual Enrollment Students Testimonials



- ▶ What have you found to be the biggest difference between college classes and HS classes?
- ▶ What has been your biggest challenge with dual enrollment?
- ▶ What do you like most about dual enrollment?
- ▶ What is one piece of advice you have for students considering the DE program?



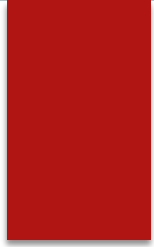
IS DUAL ENROLLMENT A GOOD FIT FOR YOU?

CHARACTERISTICS, EXPECTATIONS & SPECIAL FACTORS

Characteristics of a Successful Dual Enrollment Student



- **Self-Disciplined**
- **Diligent in Meeting Deadlines**
- **Mature/Responsible**
- **Self-Motivated/Independent**
- **Excellent Attendance Record**
- **Strong Time Management Skills**
- **Takes Initiative**
- **Self-Advocate/Willingness to Ask for Help**
- **Adaptable to Change**
- **Handles Stress Well**



Dual Enrollment
COLLEGE READY

**Remember,
you will be both
a high school
student
AND
a college student!**

DE Student Expectations....

Complete the application
process themselves

Meet deadlines set by both
NAHS and the college
throughout the year

Maintain communication with
your NAHS clubs, athletics,
class activities, events, etc.

Communicate with the college
DE staff directly

Check college email
account regularly

Check personal email and
NAHS DE Remind accounts
regularly

Possible Dual Enrollment LIMITING FACTORS



IB Programs and Dual Enrollment

- Students in the IB Diploma or IB Career-Related Programs cannot take DE classes as part of their class schedule.
 - **EXCEPTION: GA TECH DISTANCE MATH OR COMP SCI**
- IBDP & IBCP Students may pursue DE classes in the summer term

Transportation & Foreseeable Logistical Issues:

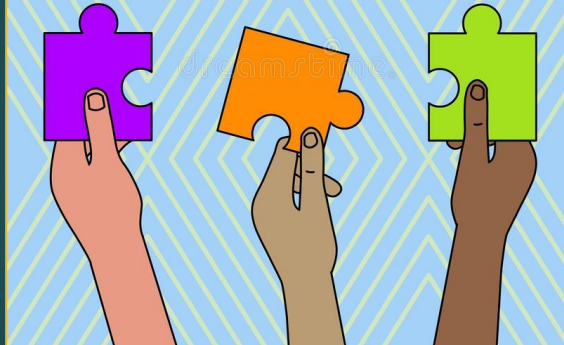
- Students/Parents are responsible for providing their own transportation to/from the college
 - **EXCEPTION DE TAKEN AT ACCA**
- Students are not permitted to be on NAHS campus during the school day unless they are here for a NAHS class

Involvement in HS Athletics/Extracurricular Activities:

- Coordinating practice & game schedules with college classes may not work out
- There is no 'early release' for games in college classes

Possible Dual Enrollment RISK FACTORS

**THINGS TO
CONSIDER!**



DE may not make academic resume competitive for admissions to highly selective colleges

- In many cases, AP and IB courses are more rigorous than the college class equivalent. Most highly selective colleges will prefer students who have pursued a more rigorous schedule offered at their HS.
 - *This may include schools such as: UGA, GA Tech, Duke, NYU, UCLA, Univ Southern Cal, Vanderbilt, Ivy Leagues, etc.*

Some college course credits may not be accepted by other institutions

- Students are responsible for researching which DE classes are transferrable to the college(s) they plan on attending after HS
- Some colleges have a maximum # of transferrable credits

You are unsure if you are ready for college-level classes at this time

- Grades earned in dual-enrollment courses go on the permanent transcript and factored into GPAs and Class Rank.
- Low DE grades could interfere with admissions to college, and HOPE Scholarship eligibility.
 - Students who fail a college class will not be eligible to continue in the de program.

What are the Similarities & Differences between IB, AP and DE classes?

IB Classes

- **Nearly all IB classes are 2 Years long**
- Final passing grades in ALL subjects are weighted 10 pts on transcript
- **IB exam score determines if college credit is earned** (IB exam score requirements vary by college)
- **Includes classes in core academic, CTE and Fine Arts subjects**
- Considered most rigorous courses available at NAHS

AP Classes

- **AP classes are 1 Year long**
- Final passing grades in ALL subjects are weighted 10 pts on transcript
- **AP exam score determines if college credit is earned** (AP exam score requirements vary by college)
- **Includes classes in core academic, CTE and Fine Arts subjects**
- Considered amongst most rigorous courses available at NAHS

Dual Enrollment

- **DE classes are 1 semester or 1 quarter long**
- Final passing grades in ALL subjects are weighted 10 pts on transcript
- **College will award course credit if student earns a passing grade in the class** (student will also earn HS course credit)
- **Includes core academic and some CTE courses only (NO FINE ARTS CLASSES)**
- Considered highly rigorous coursework

Dual Enrollment Courses

The complete Dual Enrollment Course Directory listing all state approved DE classes and pre-requisites are located on the GA Futures website: <https://www.gafutures.org/checs/dualenrollment/DECourseDirectory>



The college classes students must choose classes from the state approved DE course directory on GAFutures



Course offerings vary by college and not all classes are offered every semester



Students must meet the college's course pre-requisites as listed in the DE Course Directory



College class pre-reqs often limit which classes a DE student can take



Students should review the approved course offerings by college BEFORE applying to ensure the college they are applying to offer the classes in which they are interested.



Dual Enrollment Program Options

COLLEGES, SCHEDULES & SPECIAL PROGRAMS

NAHS List of Approved DE Colleges for 2024-25

[Click here for all approved DE College Admission Requirements](#)



DE on the College Campus

- **Atlanta Metro State College**
- **Chattahoochee Technical College**
- **GA Military College** (Metro Area Campuses)
- **GA State Perimeter College** (Metro Area Campuses)
- **GA State University**
- **Kennesaw State University**

DE Not On the College Campus

- **Atlanta Technical College at ACCA***
 - Early College Essentials
 - Infant/Toddler Childcare
 - CTE Pathways w/DE Courses
- **GA Tech***
 - GT Distance Math
 - GT Distance Computer Sci
- **Young Harris Early College**
 - Offers Online Classes Only

Dual Enrollment Program at ACCA w/Atlanta Technical College

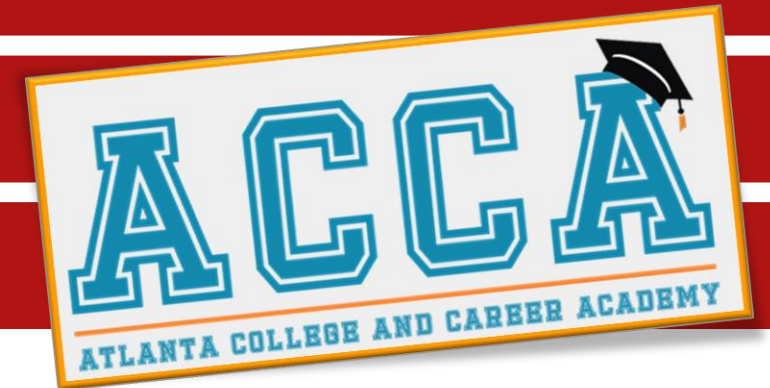
Transportation to and from ACCA provided by APS

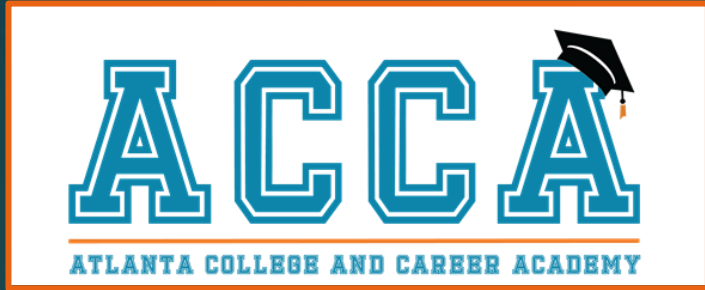
ATC Faculty goes to ACCA campus to teach classes

All students in the class are APS DE students

Part Time DE Schedule Only

- Bus picks up students at NAHS at 8:45
- DE classes are taken in the AM at ACCA
- Bus returns students to North Atlanta just prior to 3rd period
- HS classes are taken in the PM at NAHS





Atlanta Technical College DE Programs at ACCA

- Students must complete application process for BOTH ACCA and Atlanta Tech.
- All NAHS students taking DE classes at Atlanta Tech must go thru one of the ACCA programs.

All ATC Class Offerings Are Preset by ACCA

Early College Essentials (Core Academic Classes) 2.6 GPA

Fall Year 1
ENGL 1101
SPCH 1101

Spring Year 1
HUMN 1101 (Humanities)
POLS 1101 (Amer Gov)

Fall Year 2
MATH 1111 (College Alg)
PSYC 1101 (Psychology)

Spring Year 2
HIST 2111 (US History)
SOCI 1101 (Sociology)

CTE Pathways w/DE Classes (GPA Reqs Vary)

Automotive
2.0 GPA

Aviation
2.6 GPA
12 Grade Only

Carpentry
2.0 GPA

Cyber-Security
2.6 GPA

Infant/Toddler Childcare
2.0 GPA

GA Tech Distance Dual Enrollment Programs



GT Distance MATH

Pre-Req: Completion of AP Calculus BC and AP Exam score of 4 or 5

Year 1 Courses:

- Fall Term: **Math 1554 (Linear Algebra)**
- Spring Term: **Math 2551 (Multivariable Calculus)**
- Lectures are pre-recorded and accessed on a learning management system (three lecture recordings each week).
- Students may choose one of two times of day for live studio sessions held by college teaching assistants (Mon/Wed 8:25-9:15 a.m. and 5:00-5:50 p.m)

GT Distance COMP SCI

Pre-Req: Completion of 2+ college level classes in Math & Science (via AP, IB, DE) including AP Computer Science A; and have completed or concurrently enrolled in Precalculus

Both Courses are offered Summer and Fall terms:

- CS 1301: Intro to Computing
- CS 1331: Introduction to Object-Oriented Programming with Java
 - (Pre-Req CS 1301 or AP Comp Sci Exam score of 4 or 5)
- Classes are online and asynchronous
- Tests are proctored digitally & requires a computer with an attached web camera

GA Tech DE Application & Admissions Process



GA Tech DE
application timeline
differs from all other
colleges.

GA Tech DE Admissions are HIGHLY SELECTIVE

Prospective DE students should have a profile similar to students in the top quarter of GA Tech's admitted freshman class to be competitive:

- **4.1+ GPA**
- **Top 5-7% of HS Class**
- **SAT: 1370+**
- **ACT: 31+**

Summer 2024 (Comp Sci Only)

- Application: **March 1-31**
- Transcript & SAT/ACT Scores:
March 31
- AP Scores: **March 31**
- Admission Decisions Released:
April 10

Fall 2024

- Application: **May 15-June 15**
- Transcript & SAT/ACT Scores:
June 15
 - *Transcript must include final Spring Semester grades*
- AP Scores: **July 10**
- Admission Decisions Released:
July 17

Dual Enrollment Class Schedules

Part Time Dual Enrollment

- ▶ A blended schedule with some DE classes taken on the college campus and some HS classes taken at North Atlanta
- ▶ Students must align their HS and college class schedules.
- ▶ The HS and college schedules should be coordinated to ensure the student can be on time and present to all classes every day.
- ▶ Travel time is a factor that may limit a student's HS and/or college class options.

Full Time Dual Enrollment

- ▶ A schedule with only college classes and no HS classes at North Atlanta
- ▶ All classes are taken with the college campus
- ▶ Full Time DE status requires a student to be enrolled in 12-15 college credit hours per semester
- ▶ Seniors are responsible for staying informed on information and responsibilities related to graduation and other required tasks

Sample Full-Time DE Schedule

**4 College Classes
= 4.0 HS Credits**

ENGL 1101 (Advanced Comp)

MATH 1111 (College Algebra)

ECON 2100 (Economics)

SOCI 1101 (Sociology)

| | Mon | Tues | Wed | Thurs | Fri |
|-------------|--------------|--------------|--------------|--------------|-----|
| 8:00-9:15 | | | | | |
| 9:30-10:45 | ENGL 1101 | | ENGL 1101 | | |
| 11:00-12:15 | MATH 1111 | ECON 2100 | MATH 1111 | ECON 2100 | |
| 12:30-1:45 | | | | MATH 1111 | |
| 2:00-3:15 | | SOCI 1101 | | SOCI 1101 | |
| 3:30-4:45 | | | | | |

Sample Part-Time Morning DE Schedule

4 NAHS Classes = 2.0 Credits

American Lit

Algebra 2

Physics

Elective

2 College Classes = 2.0 Credits

PSYC 1101 (Psychology)

HIST 2111 (US History)

| | Mon (A Day) | Tues (B Day) | Wed (A Day) | Thurs (B Day) | Fri (A Day) |
|----------------------------|--------------------|--------------------|--------------------|--------------------|--------------------|
| 8:00-9:15 | PSYC 1101 | | PSYC 1101 | | |
| 9:30-10:45 | | HIST 2111 | | HIST 2111 | |
| 11:00-12:00 | <i>Travel Time</i> | | | | |
| 3rd period (12:15-2:15) | Alg 2 (NAHS) | Amer Lit (NAHS) | Alg 2 (NAHS) | Amer Lit (NAHS) | Alg 2 (NAHS) |
| 4th period (2:15-3:45) | Elective (NAHS) | Physics (NAHS) | Elective (NAHS) | Physics (NAHS) | Elective (NAHS) |
| | Mon (B Day) | Tues (A Day) | Wed (B Day) | Thurs (A Day) | Fri (B Day) |
| 8:00-9:15 | PSYC 1101 | | PSYC 1101 | | |
| 9:30-10:45 | | HIST 2111 | | HIST 2111 | |
| 11:00-12:00 | <i>Travel Time</i> | | | | |
| 3rd period (12:15-2:15) | Amer Lit (NAHS) | Alg 2 (NAHS) | Amer Lit (NAHS) | Alg 2 (NAHS) | Amer Lit (NAHS) |
| 4th period (2:15-3:45) | Physics (NAHS) | Elective (NAHS) | Physics (NAHS) | Elective (NAHS) | Physics (NAHS) |

Sample Part-Time Afternoon DE Schedule

4 NAHS Classes = 2.0 Credits

American Lit

Algebra 2

Physics

Elective

2 College Classes = 2.0 Credits

PSYC 1101 (Psychology)

HIST 2111 (US History)

| | Mon (A Day) | Tues (B Day) | Wed (A Day) | Thurs (B Day) | Fri (A Day) |
|-----------------------------------------|--------------------|--------------------|--------------------|--------------------|--------------------|
| 1 st period (8:45-10:15) | Amer Lit (NAHS) | Alg 2 (NAHS) | Amer Lit (NAHS) | Alg 2 (NAHS) | Amer Lit (NAHS) |
| 2 nd period (11:00-12:30) | Physics (NAHS) | Elective (NAHS) | Physics (NAHS) | Elective (NAHS) | Physics (NAHS) |
| 12:30-1:30 | <i>Travel Time</i> | | | | |
| 1:30-2:45 | PSYC 1101 | | PSYC 1101 | | |
| 3:00-4:15 | HIST 2111 | | HIST 2111 | | |
| | Mon (B Day) | Tues (A Day) | Wed (B Day) | Thurs (A Day) | Fri (B Day) |
| 1 st period (8:45-10:15) | Alg 2 (NAHS) | Amer Lit (NAHS) | Alg 2 (NAHS) | Amer Lit (NAHS) | Alg 2 (NAHS) |
| 2 nd period (11:00-12:30) | Elective (NAHS) | Physics (NAHS) | Elective (NAHS) | Physics (NAHS) | Elective (NAHS) |
| 12:30-1:30 | <i>Travel Time</i> | | | | |
| 1:30-2:45 | PSYC 1101 | | PSYC 1101 | | |
| 3:00-4:15 | HIST 2111 | | HIST 2111 | | |

NAHS DE Application Process Checklist



Applying to DE requires students to do A LOT of planning and to be VERY organized.

2024-25 NAHS Dual Enrollment Application Process Deadlines & Checklist



Eligibility for North Atlanta's Dual Enrollment Program requires students to complete each of the following steps by the deadlines indicated below. Students who do not follow ALL the NAHS DE application procedures and deadlines WILL NOT be eligible to participate in the DE program for the next school year, even if the college has accepted the student.

All DE information & resources are posted on the NAHS Counseling Website: <https://www.nahscounseling.com/dualenrollment>

STEPS 1 – 4 DEADLINE: FRIDAY MARCH 1, 2024

Step 1 NAHS DE Info Session on Zoom

- View live event on January 25 or recording of Zoom session posted on the counseling website
- Verify by completing Google Form provided at the end of the presentation (Google Form will be closed on 3/1).

Step 2 Determine if Dual Enrollment is Right for You

- Consultation w/Grade Level Counselor: Determine if DE classes (vs IB &/or AP) will best prepare you to be competitive for admissions to the college(s) you want to attend after HS
- Eligibility: Determine which NA approved colleges you qualify for based on the DE admission requirements
- Transportation: Determine a plan for transportation for the DE program you are considering

Step 3 NAHS Dual Enrollment Letter of Intent Contract

- Student & parent complete contract
- Upload a copy electronically using Google Form Link provided on the contract
- Students planning to apply to ANY DE PROGRAM (including DE via ACCA) must submit a Letter of Intent Contract

Step 4 Complete ACCA Application (For ACCA Applicants ONLY)

- Complete & submit ACCA program application for the 2024-25 School Year
- Link to Application: <https://spageatnafor.ecrboarder.com/>

STEPS 5 – 8 DEADLINE: FRIDAY MARCH 15, 2024

YOU MUST MEET THE MARCH 15 APS DEADLINE REGARDLESS OF THE APPLICATION DEADLINE POSTED BY THE COLLEGE

Step 5 College Dual Enrollment Application

- Use the links to college applications provided on the NA Approved Colleges DE Admission Requirements doc
- Submit ALL documents required by the college to have a complete application on file
- Verify with the college that your application on file with them is complete (only the college can do this)

Step 6 GAFutures Dual Enrollment Funding Application

- Go to www.GAFutures.org
- Under 'Shortcuts' Click on Dual Enrollment Funding Application
- Click 'Apply Now' button and log in or create an account if needed
- Students must complete the entire funding application for GAFutures to generate and email the parent portion.
- Both the student and parent portions of the application must be completed by the deadline

Step 7 Official HS Transcripts (N/A for ACCA Applicants)

- Go to www.Parchment.com and log in or create an account if needed
- Submit request for official transcript to be sent to the college(s) to which you are applying
- Transcript request must be submitted via your Parchment account by the deadline

Step 8 Official SAT, ACT, PSAT or ACCUPLACER Test Scores (N/A for ACCA Applicants)

- Students are responsible for testing and having score reports available in time to meet this deadline
- Send official test scores directly to the college using the student account used to register for the test
 - SAT: CollegeBoard.org
 - ACT: ACTStudent.org
 - PSAT: Contact Your School Counselor
- ACCUPLACER: Schedule test directly with College Testing Center; Follow directions given by the testing site to send official scores to another institution.



NAHS DE Application Checklist Steps 1 - 4

Deadline: March 1, 2024

Students who do not complete ALL these steps by the March 1 deadline will be INELIGIBLE to participate in DE for 24-25 school year

STEP 1

VERIFY VIEWING of DE ZOOM INFO SESSION

- Attend live event or view recording of Zoom session
- Verify by completing Google Form provided at the end of the presentation
- Google Form will close after March 1

STEP 2

DETERMINE IF DE IS RIGHT FOR YOU

- Consult with grade level counselor to consider ALL limiting & risk factors to determine if DE is a viable option for you
 - *Is it a good academic fit for your post-secondary plans?*
 - *Is it a good fit based on your JR/SR year plans?*
 - *Do you meet the colleges' [DE admission requirements](#)?*
 - *What is your plan for transportation?*

STEP 3

NAHS DE LETTER OF INTENT CONTRACT

- Student & parent complete contract
- Upload a copy electronically using Google Form Link provided on the contract
- Required for ALL students pursuing ANY DE PROGRAM (including DE via ACCA)

STEP 4

COMPLETE ACCA APPLICATION

- Complete & submit ACCA program application for the 24-25 School Year
- Link to online application is on the NAHS DE Checklist



NAHS DE Application Checklist Steps 5 – 8

Deadline: March 15, 2024

Students who do not complete ALL these steps by the March 15 deadline will be **INELIGIBLE** to participate in DE for 24-25 school year

Step 5

Complete The College's Online Application for Dual Enrollment

- Use the links provided on the [NAHS Dual Enrollment College Admission Requirements sheet](#).
- Submit ALL required supplemental documents needed to have a complete application on file
- Verify with the college that your application file is complete (only the college can do this)
- **YOU MUST MEET THE MARCH 15 DEADLINE REGARDLESS OF THE DEADLINE POSTED BY THE COLLEGE**

Step 6

Complete DE Funding Application on GAFutures.org

- Go to www.GAFutures.org
- Click on Dual Enrollment Funding Application
- Click '**Apply Now**' button
- Both the student and parent portions of the application must be submitted for the application to show completed status



NAHS DE Application Checklist Steps 5 – 8

Deadline: March 15, 2024

(Steps 7 & 8 Do Not Apply to ACCA DE Applicants)

Students who do not complete ALL these steps by the March 15 deadline will be **INELIGIBLE** to participate in DE for 24-25 school year

Step 7

Send Official Transcripts To The College Via Parchment

- Go to www.Parchment.com
- If you do not already have a Parchment account, you will need to create one
- Transcript request must be submitted electronically thru your Parchment account by the deadline



Step 8

Send Official Sat, Act, Psat Or Accuplacer Scores To The College

- Students are responsible for providing official test scores to the college's admissions office
- **SAT/ACT:** Official SAT/ACT scores must be sent directly to the college using your Collegeboard or ACT account
 - Last eligible ACT test date: Feb 10, 2024
 - Last eligible SAT test date: Dec 2, 2023
- **ACCUPLACER:** Schedule test directly with college's testing center. Students must follow the directions given by the testing site to send official scores to another institution if needed.
- **PSAT and PreACT:** Contact your school Counselor

What's
Next?

NAHS DE Application Checklist Step 9

Deadline: May 1, 2024

(Does Not Apply to ACCA DE Applicants)

Students who do not complete this step by the May 1 deadline will be **INELIGIBLE** to participate in DE for 24-25 school year

Step 9: Provide Proof of College Acceptance Confirmation



- Colleges will notify students of admission decision via email
- Forward admissions email confirming you've been accepted to the college's DE program to Ms Marino
- If you have not heard from your college by April 15, you should contact the college's DE office to check on the status of your application.
- **If you met the deadlines for Steps 5-8, you will receive your acceptance notification from the college in time to meet this deadline.**



NAHS DE Application Checklist Step 10

Deadline: May 15, 2024

(Does Not Apply to ACCA DE Applicants)

Students who do not complete this step by the May 15 deadline will be INELIGIBLE to participate in DE for 24-25 school year

Step 10: Attend A NAHS DE Registration Session W/Ms Marino



- Complete all orientation tasks and clear all college account holds as directed by the college
- Attend a mandatory DE Registration session with Ms Marino (May 6-15)
- Summer/Fall semester college classes will be selected and registration with the college will be completed
- Courses will be submitted and approved for state funding
- NAHS class schedule will be finalized for 24-26 school year

**NAHS Counselors
are available to assist
prospective DE
students by providing...**



How we can help...

- ▶ **Academic advising to help determine if DE is a good fit and best option for you and your college/career goals.**
- ▶ **Assistance with completing any of the steps on the application prior to the deadlines**
 - Help sessions to get assistance with completing Steps 5-8 will be offered in March
- ▶ **Access to all the DE info, documents, resources & links needed to complete Steps 1-8 by the deadlines**
 - All DE info, documents, links & resources available on the NA Counseling Website
 - <https://www.nahscounseling.com/dualenrollment>



NAHS Dual Enrollment Limitations

NAHS CANNOT help you with...

- **Accessing CollegeBoard or ACT student accounts or sending any official test scores**
- **Verifying if your college application is complete**
- How quickly your application is processed and reviewed by the college
- **Resolving any holds or restrictions on college accounts preventing you from registering for classes**
- **Accessing or monitoring grades for college classes**

NAHS has NO control of or influence with....

- **Whether or not you are accepted by the college**
- The # of hours in the State of GA DE Funding Cap
- College course offerings, seat availability, or schedule
- **Resolving college class related issues** (i.e. absences, grading practices, exam schedules, problems with instructors, etc.)
- **College instructors, faculty & staff will only communicate with students** and will not communicate with their parents/guardians (unless the student gives FERPA authorization)

**START
HERE!**

Getting Started with Your DE Planning

Complete Step 1 Here:

- ▶ Verify you have completed this DE Info Zoom Session
- ▶ Scan the Code or Click the Link to submit the Step 1 Google Form



[https://forms.
gle/h9THfisoN
YE99GWb9](https://forms.gle/h9THfisoN
YE99GWb9)

Start Step 2 Here:

- ▶ Visit DE Webpage:
<https://www.nahscounseling.com/dualenrollment>
- ▶ Research DE as an option using NAHS provided resources
 - ▶ DE Program Quick Guide
 - ▶ DE Approved College List & Admission Requirements
 - ▶ DE Application Process Checklist
 - ▶ DE Letter of Intent Contract



Questions?

Please type your questions into the chat...